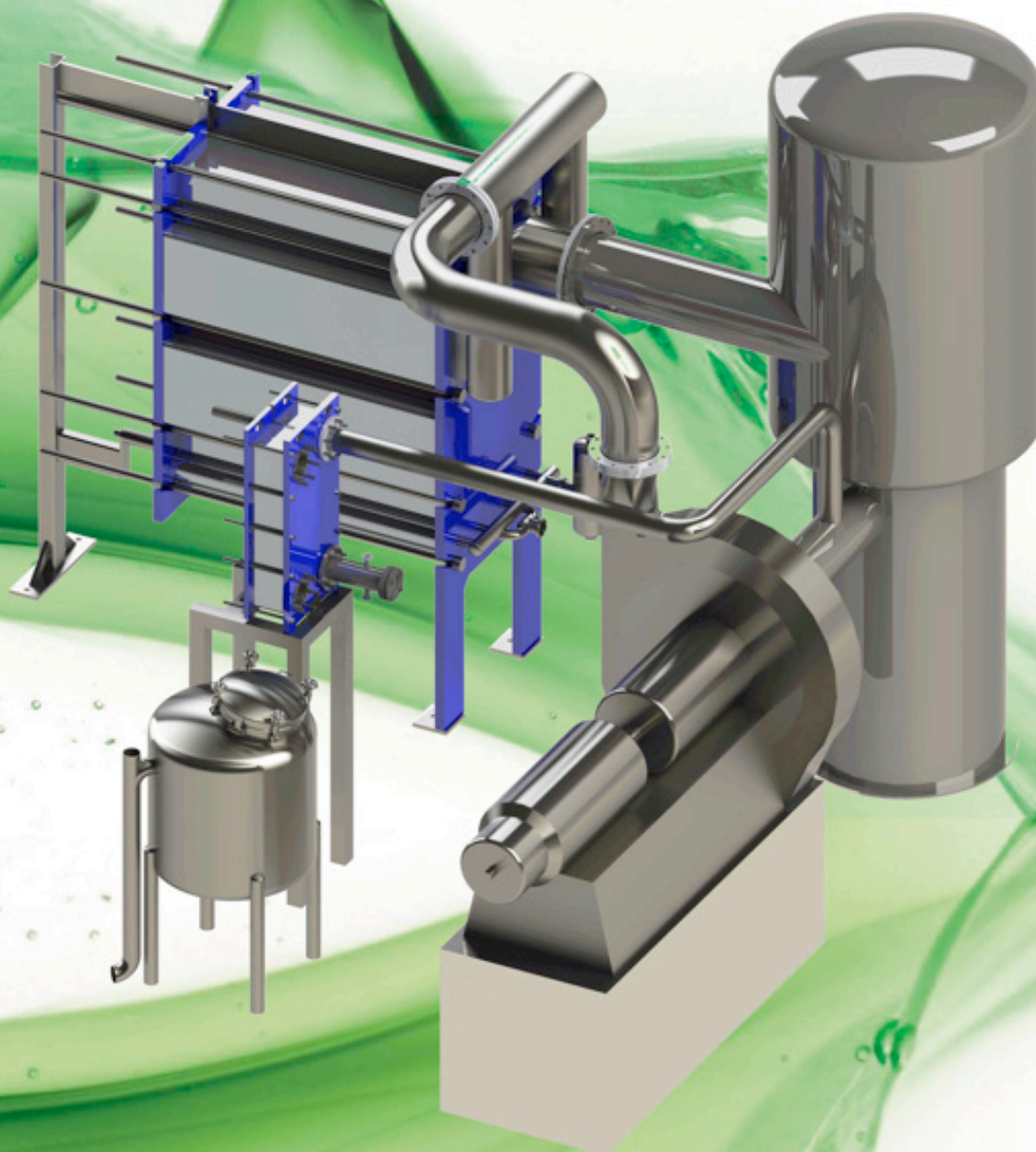


**Schmidt**

AN API HEAT TRANSFER COMPANY



**SIGMASTAR® MVR**  
Plate Evaporator Technology  
with Mechanical Vapor Recompression

## Energy Efficient Evaporation using modern Mechanical Vapor Recompression Technology

### Construction:

- Plate evaporator combined with radial compressor
- Components also available in special materials
- Multiple stages possible (parallel or series)
- May be combined pre-stage for high concentrator or connected in-line after reverse osmosis
- Multiple compressors possible where increased pressure is required
- ATEX version optional



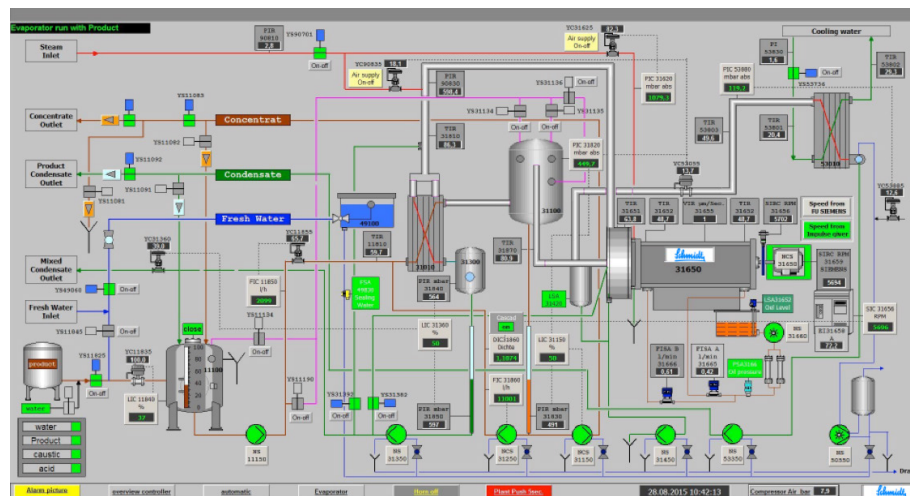
SIGMASTAR 90V MVR – Evaporating capacity: 2.000 kg/h

### Advantages:

- Reduced operating costs
- Electrical power versus steam
- Compact design
- Evaporating capacity of 1,000-10,000 kg/h
- Fully automated mode of operation
- Cleaning in place (CIP) on hand

### Utilization:

- Wash water
- Waste water
- Beverages
- Protein hydrolysate
- Plant extracts
- and more



Operator panel view

### GLOBAL HEADQUARTERS

2777 Walden Avenue | Buffalo, NY 14225 USA | +1.716.684.6700 | sales@apiheattransfer.com